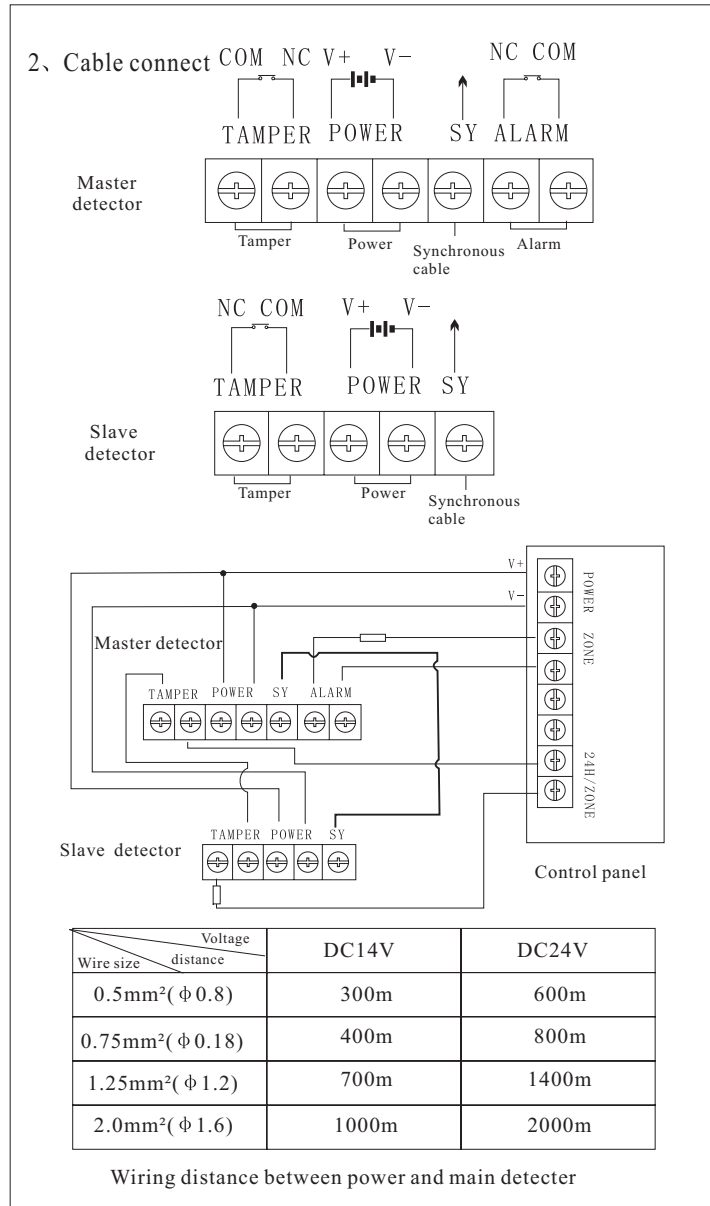
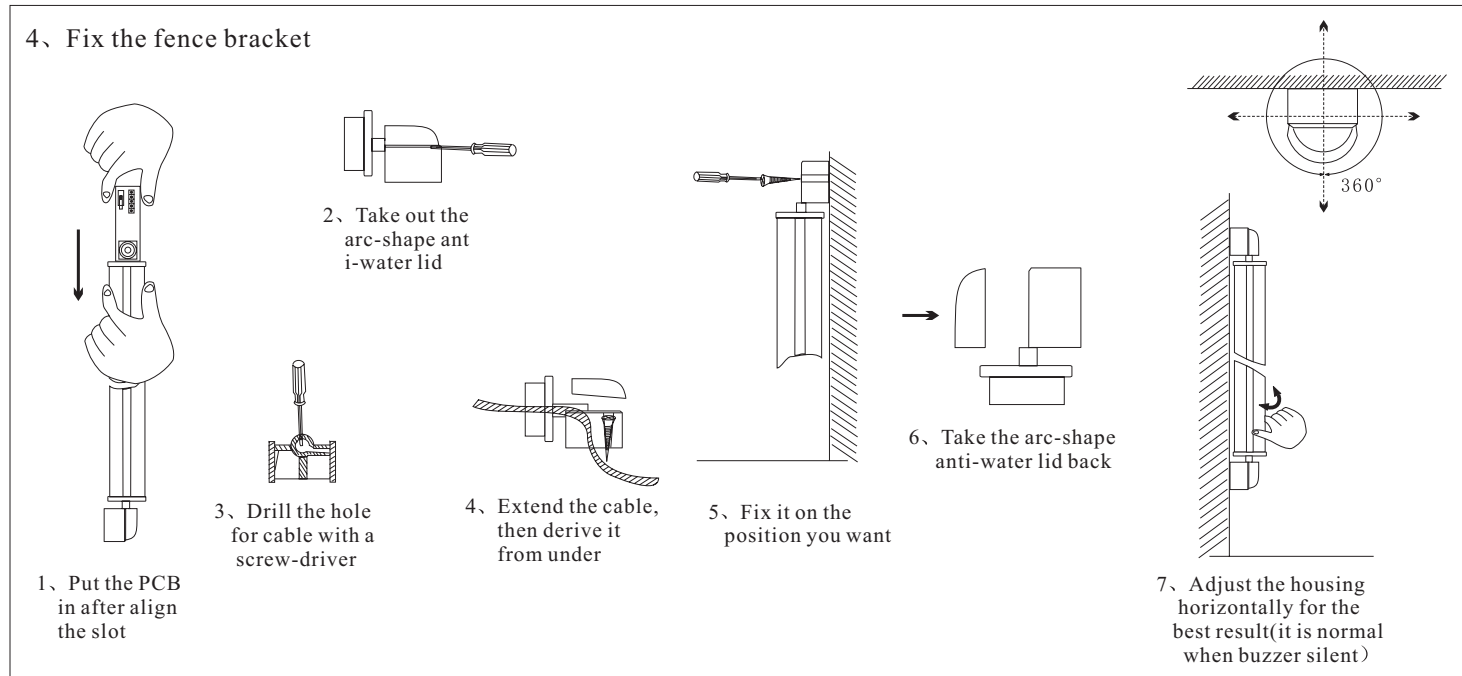
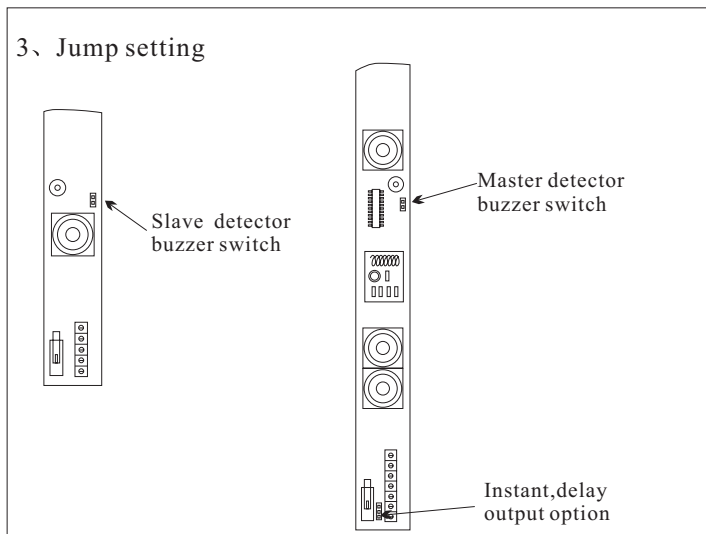
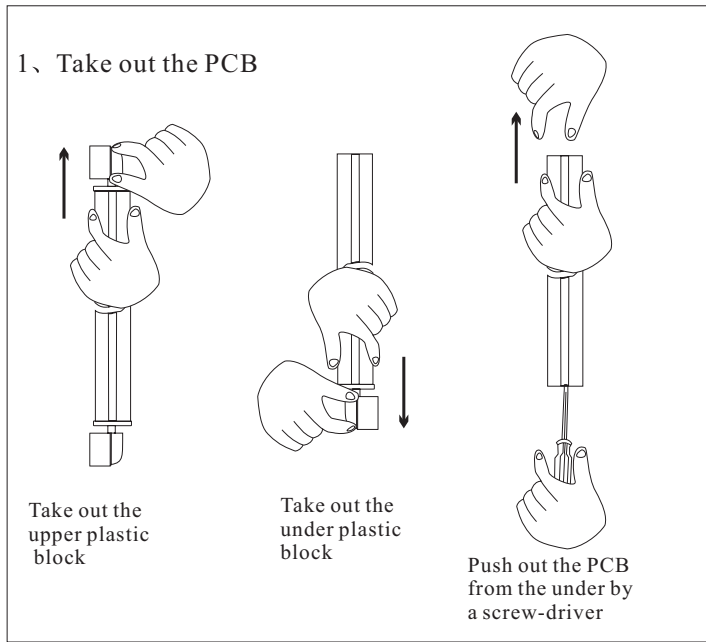


5. Installation and setting



Installation guide of ABX digital frequency intelligent infrared fence

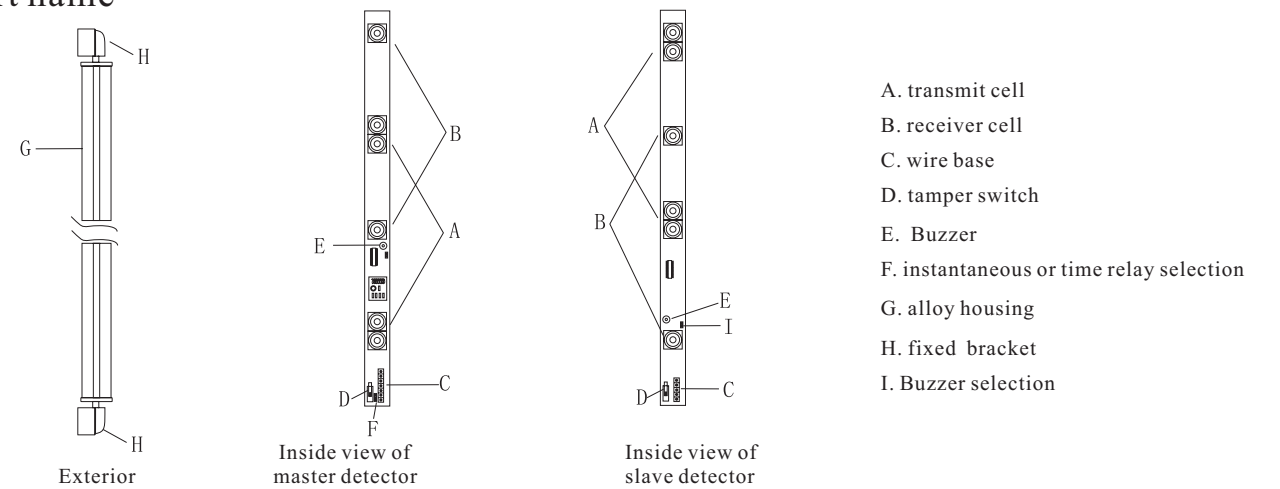
1. Brief introduction

ABX series digital alter-frequency intelligence infrared fence is the best infrared fence with highest quality and fullest functions. Adopt CPU micro-process digital control technology, with AI-alloy housing, with advanced technology, distinguished ability, designed perfectly, use coaxial un-spherical lens with double focus, advanced emitter fit for gain auto-adjust technology, with high sensitivity, strong ability of anti-interfere. Completely fit for indoor or outdoor of 24-hour, Perfect AI-alloy housing, tamper, anti-opening circuit design; 360° discretionary rotate can let adjust more quick and accuracy; Adopt photoelectric recognize principle can prevent small pet, bird, tree, leave, specially sunlight result to false alarm effectively. With pre-alarm and trouble output functions, wired/wireless compatibility, 4,8,12 beams eligibility. Silvery housing, streamline design, simply and glory, measure to the requirement of veranda of modern house, fence of villa, open warehouse, pasture, etc.

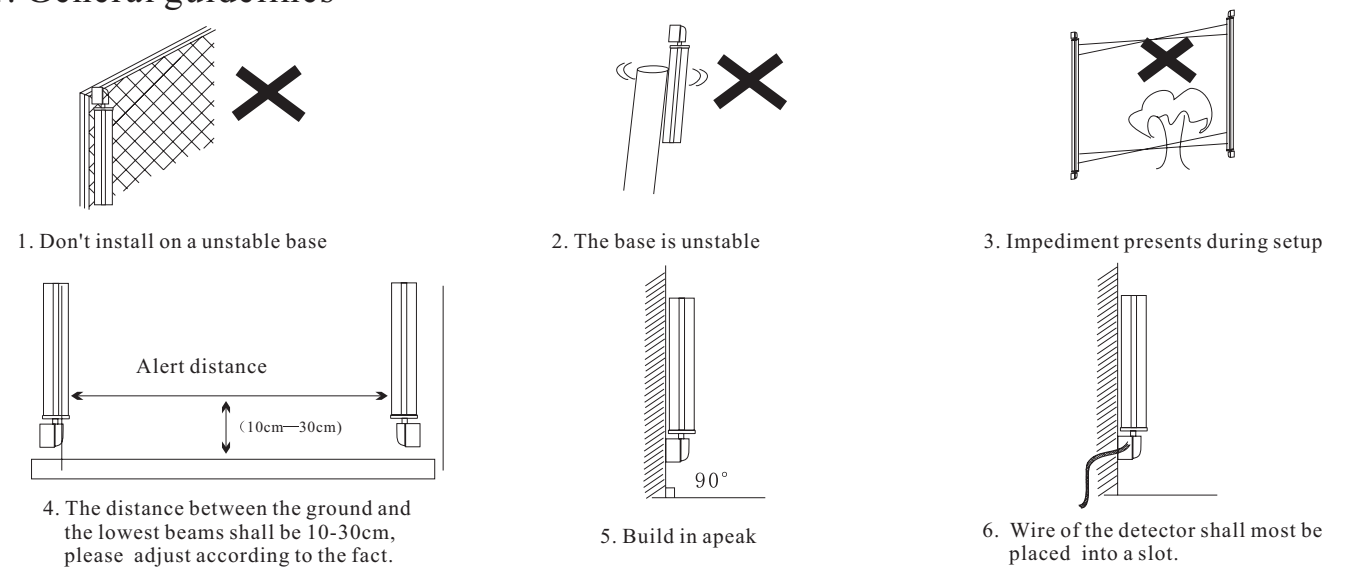
2. Characteristic

1. Photo electric detect structure, totally avoid the interference from sunlight.
2. Buzzer will pre-alarm when single beam blocked
3. Special trouble output port
4. Instant alarm and delay alarm eligibility
5. AGC control technology which ensure safe from the interference of surrounding.

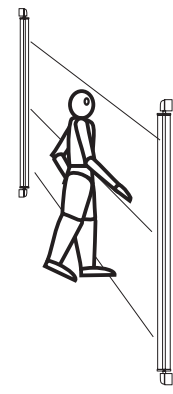
3. Part name



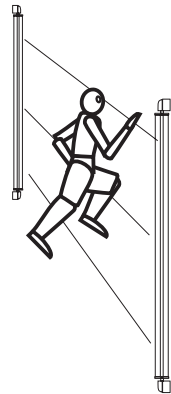
4. General guidelines



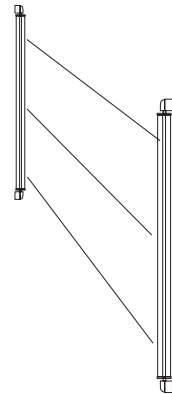
6. Walking test



Test by 0.3m/s



Test by 4m/s



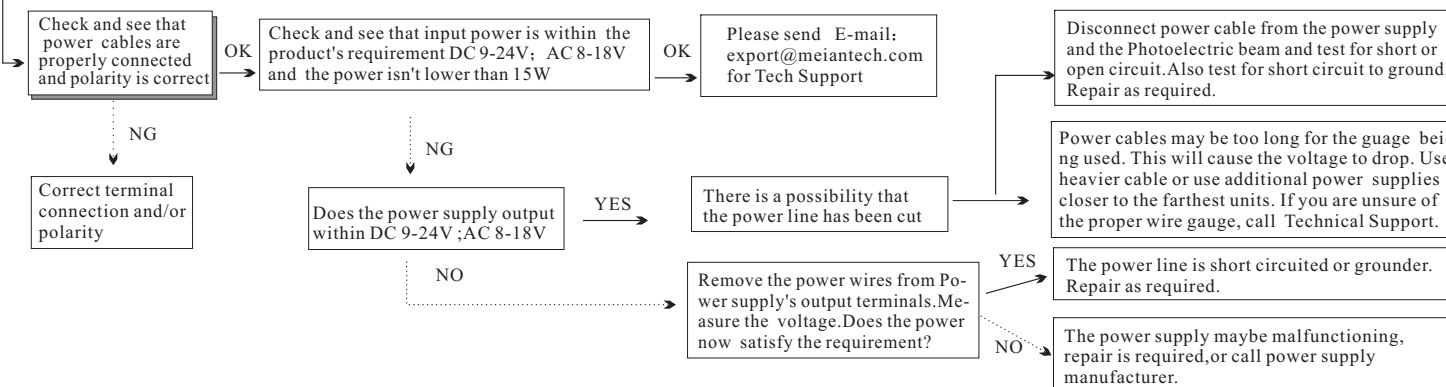
Both of the tests pass, will be successful

7. Technical parameters

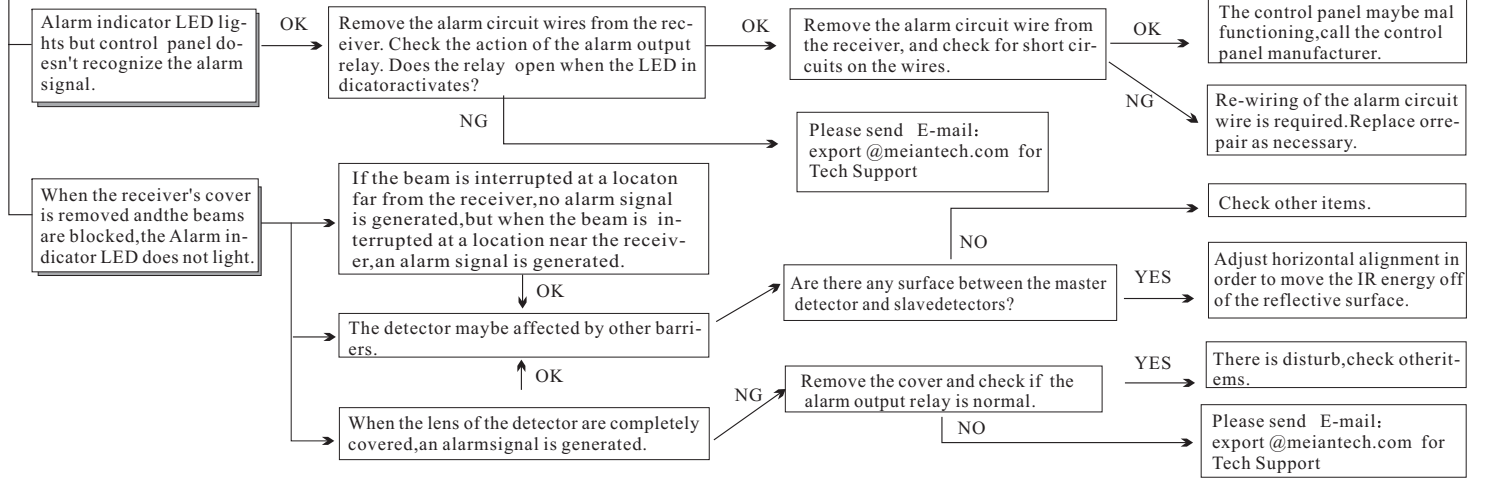
Model	ABX-104	ABX-106	ABX-108	ABX-110	ABX-112	ABX-204	ABX-206	ABX-208	ABX-210	ABX-212	ABX-404	ABX-406	ABX-408	ABX-410	ABX-412	ABX-604	ABX-606	ABX-608	ABX-610	ABX-612
Alert distance	Outdoor 10m					20m					40m					60m				
	Indoor 20m					40m					80m					120m				
No. of the beams	4	6	8	10	12	4	6	8	10	12	4	6	8	10	12	4	6	8	10	12
Detecting mode	Neighbor 2 beams blocked simultaneous																			
Optical source	Infrared digital pulse beam																			
Response speed	100-500msec																			
Alarm output	Relay contact output:NO.NC contact rating:AC/DC30V 0.5Amax																			
Power supply	DC 9-24V AC 8-18V 15W																			
Power consumption	40mA	50mA	60mA	60mA	70mA	80mA	80mA	90mA	100mA	100mA	110mA	120mA								
Temperature&humidity	-25℃-55℃ 5%-95%RH (relative humidity)																			
Dimension	Refer to the diagram																			
Tamper output	Contact output:NC contact rating:DC24V 0.5Amax.																			
Optical axis adjustment	360°																			
Material	Al alloy metal housing																			
Net weight	600g (4-beam)					1200g (8-beam)					1800g (12-beam)									
Gross weight	850g (4-beam)					1550g (8-beam)					2600g (12-beam)									

8. Trouble solution

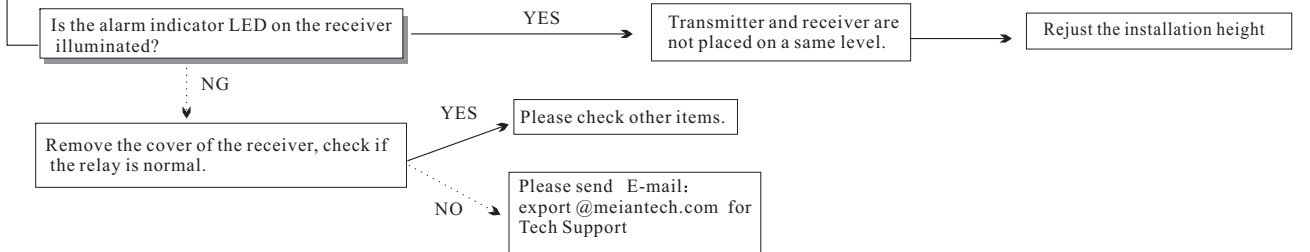
1. "No Action" on the transmitter or receiver after power has been applied



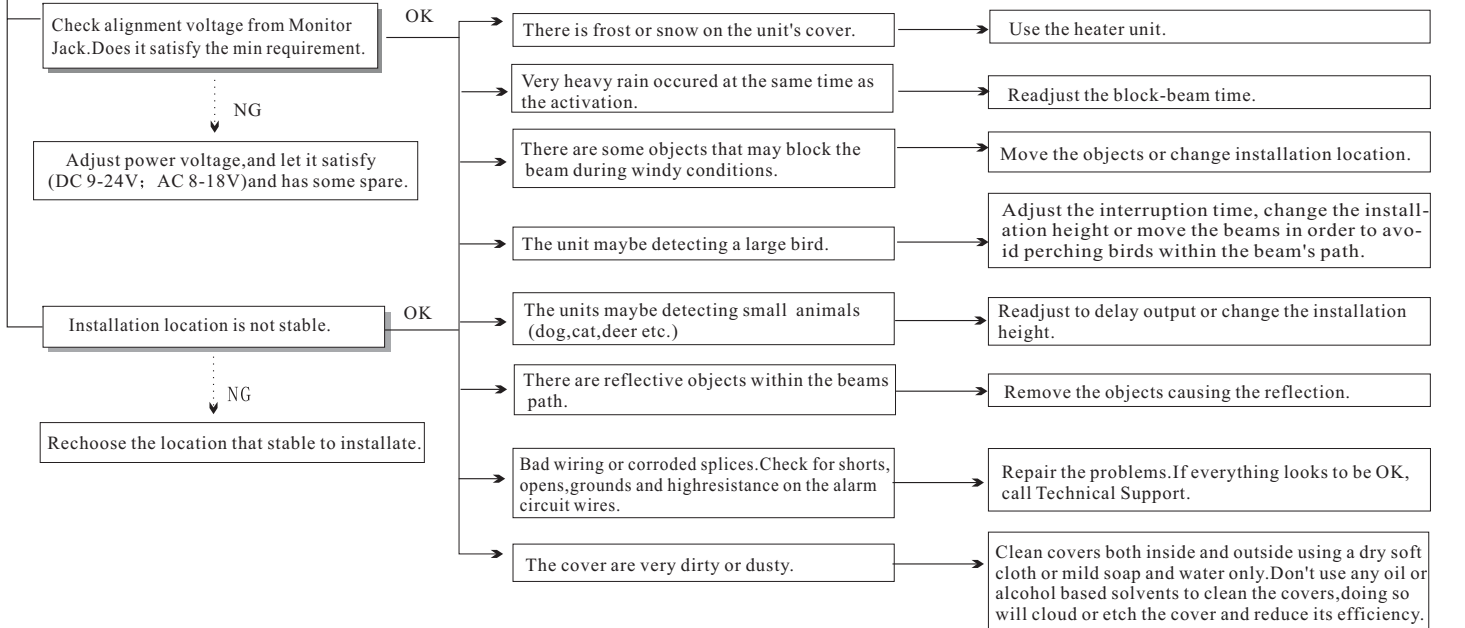
2. "No Action" on alarm zone even though the beams are completely blocked.



3. Alarm signal is being generated though beams are not blocked



4. False alarm



9. Special comments

Even the most sophisticated detectors can sometimes be defeated or may fail to warn due to: DC power failure/improper connection, malicious masking of the lens, tampering with the optical system, decreased sensitivity in ambient temperatures near that of the human body and unexpected fail-ure of a component part. The above list includes the most common reasons for failure recommended that the detector and the entire alarm system be checked weekly, to ensure proper performance. An alarm system should not be regarded as a substitute for insurance. Home and property owners or renters should be prudent enough to continue insuring their live sand property, even though they are protected by an alarm system.



WARNING! Changes or modifications to this unit not expressly approved by the party responsible for compliance could void the user authority to operate the equipment.