

HEXA

Video Capture Card Manual

Using the system before, check that the following conditions:
Shall not be installed in high humidity, there is dust or black dirt

Avoid direct sunlight and direct heat. Heat the product adversely

To avoid electric shocks and magnetic materials

Avoid hot or cold (Recommended temperature range should be 5 °C ~35°C)

Conductive material to avoid the trickle-down ventilation holes

Before installing, shut down the system

Ensure the system have sufficient space

Can not be installed in places where the product caused by sloshing

In well-ventilated area, use this product

Not allowed to demolish the system

Shall not place heavy objects on top of the product

Preface

Introduction

DVR video surveillance system to digitally record images, which In addition to providing a clear picture, but also a continuous repeated video recorders to avoid frequent replacement of analog tape shortcomings. In addition it has the remote feature allows you to easily monitor the implementation of the remote. It is the crystallization of a variety of techniques of modern technology. With the computers, networks and image processing, transmission technology, rapid development, which will become a network video surveillance system development trend

System Recommendation

Recommended hardware system configuration

- CPU: C IV 2.0 more, Intel P-IV 1.8Ghz
- Memory: 256 M or more
- Graphics: ATI 64MB or above / Geforce2 MX400 64M or above
- HDD: Supports IDE, SATA, SCSI, and serial hard drives, hard disk capacity, as the video data to save time, be required to
- LAN: 10Mb
- Motherboard: to make use of Intel 845PE or more types of motherboards

Recommended software

- OS: Windows 2000 Family + SP4、Windows 2000 Professional + SP4、Windows XP Professional + SP2
- DirectX: DirectX 9.0
- Display: 1024x768, True Color 32 bit, fonts select the default

The product installation

1.1 Hardware Installation

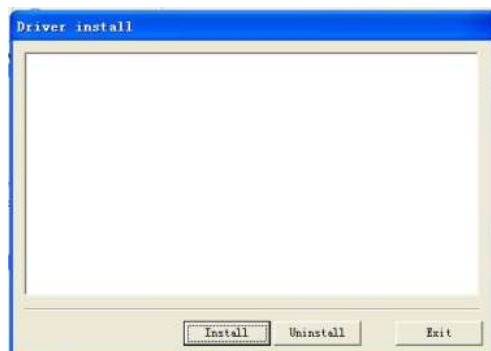
Video capture card inserted into the computer's motherboard PCI slot above, and then boot your computer, enter the system after the system will be prompted to find a new hardware (pictured)



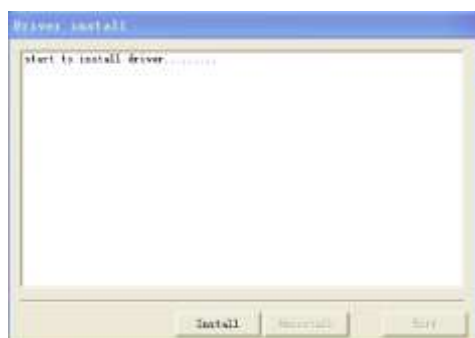
If the system is not prompted to shut down your computer, pull down the video capture card, using an eraser board with PCI slots will be in contact "golden finger" to wipe clean.

1.2 Driver Installation

Step 1: From the software CD-ROM, open the Driver folder and run driver Install program, the following pop-up window



Step 2: Click the Install button, pop-up the following interface



Species over tens of seconds, the "install the driver" Install pop-up-driven process of "Hardware Installation" dialog box, click "continue" will continue to install the driver



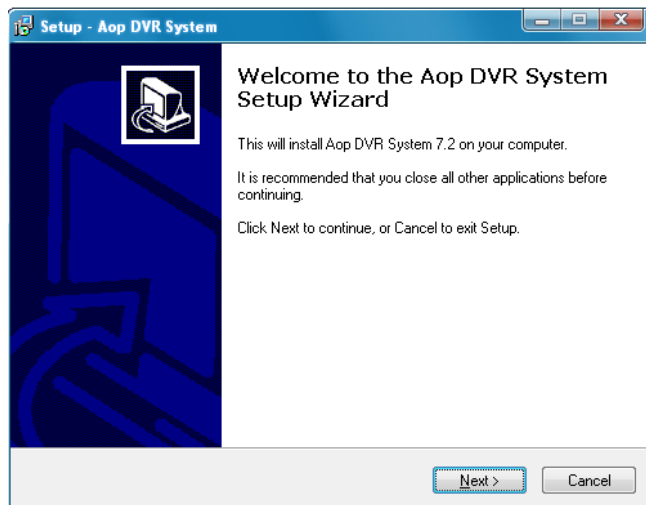
Driver installation is complete, run the CD-ROM inside the host  nstaller



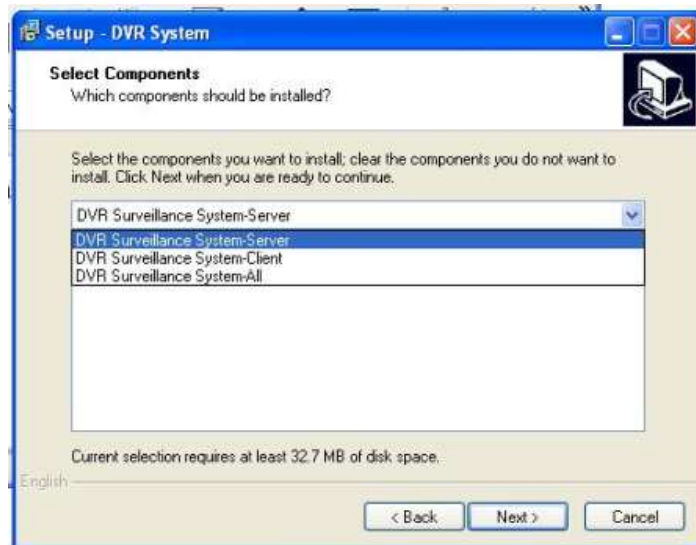
。 Double-click the Run pop-up installation interface



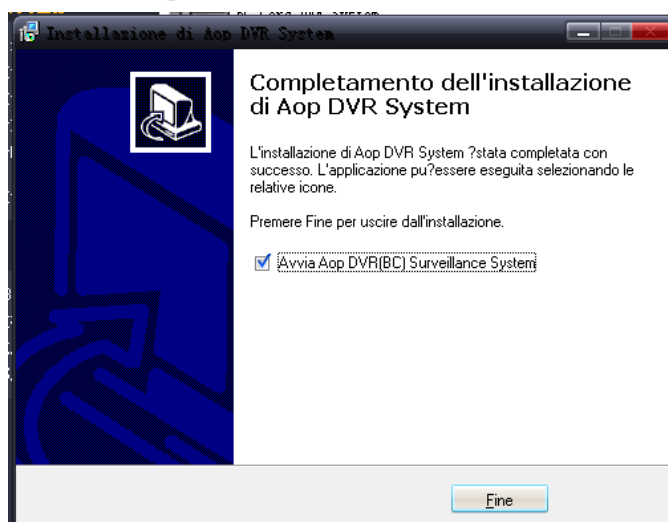
Choose your language (Chinese, English, Italy, in three languages)



directly to the next step to



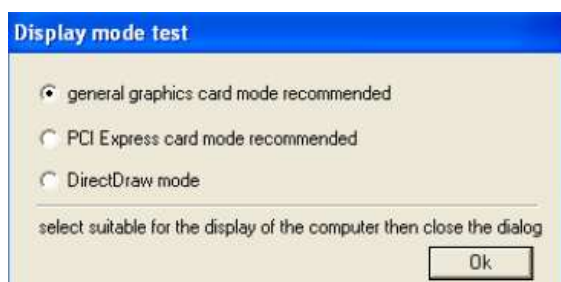
select the components to install (server-side and client-side),



1. System Login

System installation is completed, will generate desktop < DVR Surveillance System> icon, please double-click operation. Or choose Start -> All Programs -> DVR Digital Monitoring System -> DVR digital monitoring system operational procedures.

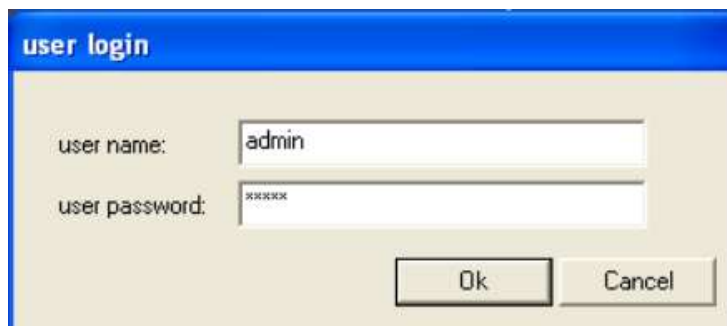
The first operation, the system will pop up display model



dialog box, users can use the card to set up according to your PC, or one by one test, select the optimal display performance integrated manner. After the set, the system will work in this show that the default mode.

If necessary, users can in <system parameter setting> pages of amended.

Each operating system user login window will pop up, the system's default user name and password are admin (lowercase), the correct input user information, click on Login determined that the completion of operation, the main interface into the monitoring program. Users can directly <system parameter setting> Page Setup default login username and password to login to skip the operation.

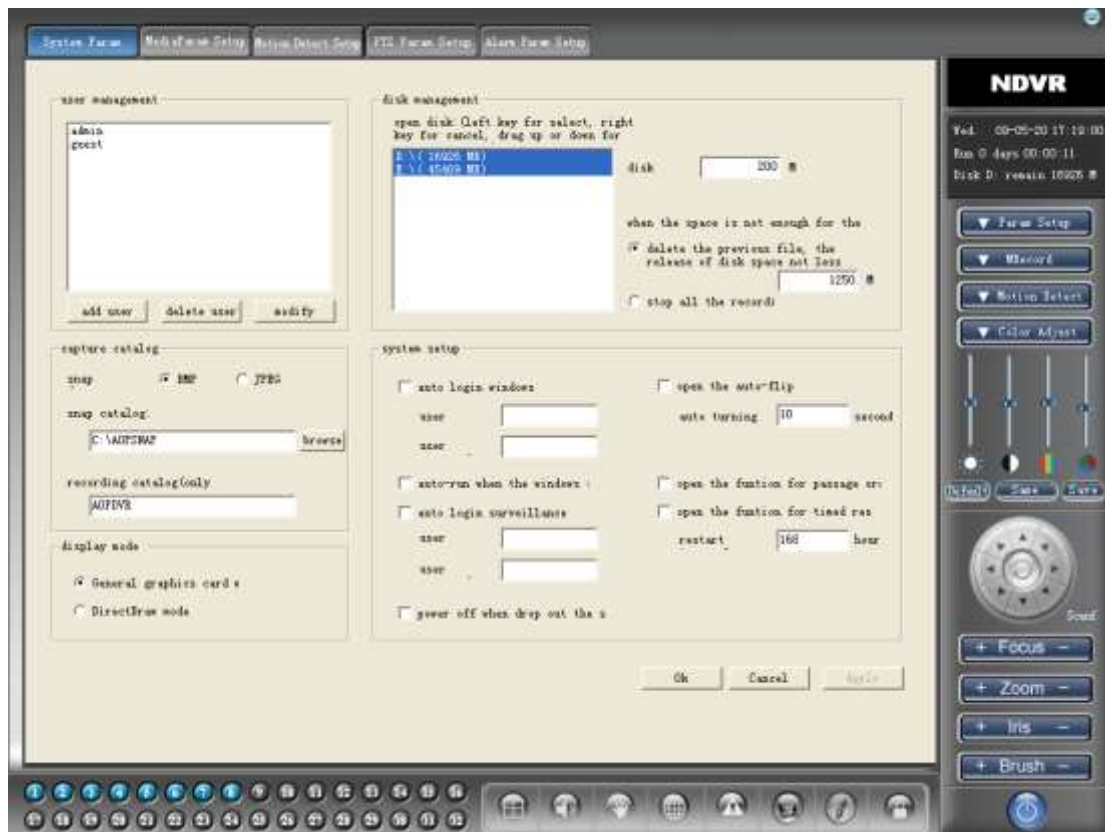


A screenshot of a 'user login' dialog box. The dialog has a blue title bar with the text 'user login'. The main area is light beige. It contains two labels: 'user name:' and 'user password:'. The 'user name:' label is to the left of a text input field containing the text 'admin'. The 'user password:' label is to the left of a password input field containing six asterisks '*****'. At the bottom right of the dialog are two buttons: 'Ok' and 'Cancel'.



Setting

System parameters set Right click interface "Preferences" button set
into the operation.



2.1.1.1 User management

The system has been built for admin (lowercase) supercomputer users, the highest management authority. Users may need to amend the user name, password, but not delete and modify its super user management attributes.

*Adding users: Administrators may need to add new users, choose "Add User" button to enter <add users> set up pages, importation and distribution of user information appropriate operational competence good choice after determining withdrawal. Users operating authority include: "User Management" competence, "System Preferences" competence "pan-tilt control" authority, "the manual Video" competence, "history about the" competence, "Data Backup" competence, "the paper intervals" competence, "Video visit the "powers and" Remote Control "competence. Administrators can access through the remote monitoring to determine the reasonable choice landing remote users (including IE Login landing and client) can browse the channel quantity and specific configurations. In addition, the need of special note is that the "Video View" minimum competence for users operating authority, each system user must have the authority to normal work, so the system default to gray, without modification.

user name:

user password:

password confirm:

Ok Cancel

user authorization

☒ user management ☒ parameter setup ☒ PTZ control ☒ manual recording

☒ history search ☒ data backup ☒ playback file ☒ video browse

remote monitoring channel:

☒ 01 ☒ 02 ☒ 03 ☒ 04 ☒ 05 ☒ 06 ☒ 07 ☒ 08

Amend users: amend user information, the redistribution of operating authority, the methods of operation Ibid.

Delete users: delete users of the system information. Super users with the highest authority, any other users can not be deleted.

Note: The above are required to operate with the current logged in user "User Management" authority to carry out.

2.1.1.2 Snapshots directory / video catalog

Snapshot Contents: setting system snapshots document storage path to the importation, including the entire drive path, the default directory snapshots for the C: \ SNAP.

* Video Catalog: Catalog System default video for DVR, users may need to be amended. Only when the set input directory name, the system will combine the current video disk automatically create a corresponding directory. Such as: The current video disk set for the D, in default conditions, the system will automatically create D: \ DVR directory, and video and saving

the file to the directory

2.1.1.3 Display mode setting

when the first Login <display mode testing dialog> choice in the same model to provide users re-installed display mode method.

2.1.1.4 Disk Management

Users may need to designate video disk and adjust its priorities, methods of operation: the target disk, click button selected disk, right-click Cancel choice; While holding down the left-upper and lower Drag adjustable video disk priorities.

Reservations disk space: disk space is reserved for certain operating procedures to ensure that the needs, proposed to retain the space of not less than 200 M.

Documents coverage strategy: When all disk space for video files were recorded, the system's default approach. Users may choose at this time to stop all video or deleted in accordance with the chronological order of the earliest video documents. The system's default handling for the first 10 deleted video files in order to free up space to video.

2.1.1.5 System setting

* Users can automatically here default Windows user login information (username / password), as well as automatic control system user login information (username / password). After the opening of the corresponding procedures will use Windows user login information and monitoring system, thereby skip the login interface, achieving unattended automatically activated. This setting will take effect when the next launch.

* Automatic Tip: user-friendly multi-channel monitoring in the division round, as when, round for the second time in as adjustable units.

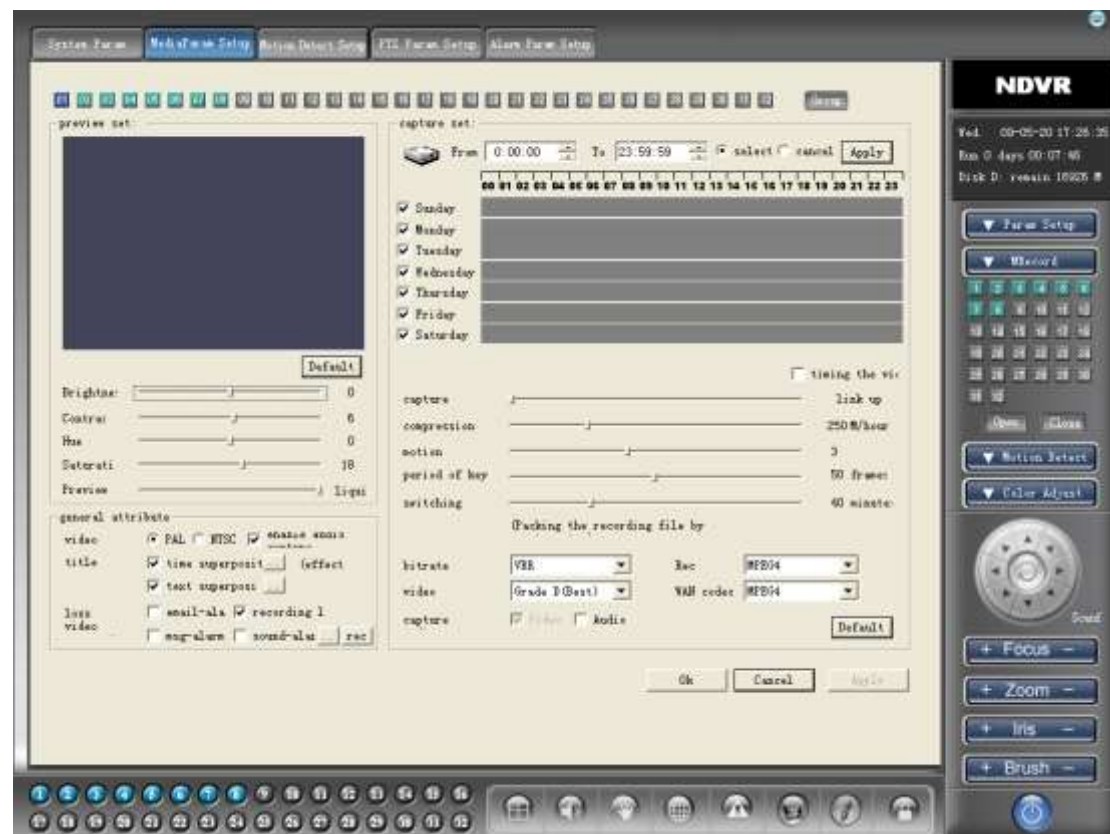
* Open access sequencing functions: the function turned on, in the main user interface can be used in the mouse drag-and-drop approach to redefine channel order to break the previous definition of hardware dependence on the order of the channel. The channel will also be used for other priorities modules channel selection criteria used for the first time, please set

a good reasonable access priorities, the best course of operating system remains unchanged.

After the completion of parameter setting click "application" Save settings, click "OK" to return to the main interface

2.2 Media parameter setting

Click the label "media Preferences" set to enter pages



2.2.1 Preview parameter setting

Users can individually on each channel preview effects settings can be set up parameters including brightness, color, contrast, saturation, users can adjust these parameters of the image was satisfied with the results, click on <default> restore to the system default settings.

Preview frame rate: fluent in a number of requirements on the screen is not very high occasions, users may adjust the preview frame rate, a rational allocation of system resources to achieve the best video effects. Frame-rate set is divided into three grades: General - consistency - fluent, left-to-right screen fluency gradually rise.

2.2.2 Record parameter setting

2.2.2.1

Timing video parameter setting: Week of the system to conduct regular video units for scheduling tasks, users may need to set video time. Setting:

* Video slots set: to set the date in front of "√" election, the video set a good beginning and ending time, choose button "select", click "application" that is set success. Users can repeat this step to fulfill other video slot set. After selecting the time of the period chosen by the user on the show for the blue.

* Video slot canceled: basic steps with video slot set, in setting a good time and the corresponding cancellation date, select button "cancel", click "application" can be carried out. Users can also set time slots will be available for 00:00:00-23:59:59 approach to the overall cancellation, operation after the completion of re-setting the new video slots. After the abolition of blue disappeared with time.

* Timing opening video: video control tasks regularly opened / closed. "√" The elections can be conducted in accordance with user settings during regular video.

2.2.2.2 Compression parameter setting

Bit rate control: CBR / VBR, that is, we usually refer to the constant stream (CBR) and the constant quality (VBR) compression mode, CBR bitstream basic mode for constant, can help us good estimates for video disk space, and VBR mode, the method uses a constant quality, more bitstream will be allocated to sports images to enhance sports video compression.

Compression bit rate: M / hours as a unit, more of the allocation rate for better video can be effective, users may need to choose.

Campaign forecast: P and B frame compression parameters, through reasonable options to increase the video quality, reduce disk occupation, but may also consume more CPU resources, careful selection. Recommended default value is 2.

1 frame period: key frame frequency of use, reasonable use can reduce the use of disk space and improve video quality. The system's default is 50.

Capture Frame Rate: Setting up with the preview frame rate, the system defaults to <coherent>

Switching period: video documentation package intervals, usually 40-90 minutes.

Video quality: system will be divided into four video quality levels, from low to high-quality upgrade step by step, the parameters directly affect video effects, but must be in accordance with user machine configuration and the number of channels to choose, used for the first time, the system will automatically configuration, please carefully chosen.

Recommendations: Most users can directly use the system default values in action.

Senior operation: users can through the "group" in a manner of acquisition channel volume set.

Set method: single-channel choice mode (the default mode), set up good corresponding video parameters, parameters, as well as generic attributes preview, click on "group" in the button set into the batch mode, this channel has for the dark blue screen, users can select one by one, or press and hold the button pulling the mouse batch mode selected channel. Click on the "application" will be set up to choose parameters selected channel.

Tip: using the mouse to select Batch, the starting point Select button in the channel between the space, press and hold the right mouse button mouse pulling cancel channel selection.

2.3 Motion detection setting

Click the label "motion detect setup " into the set up pages

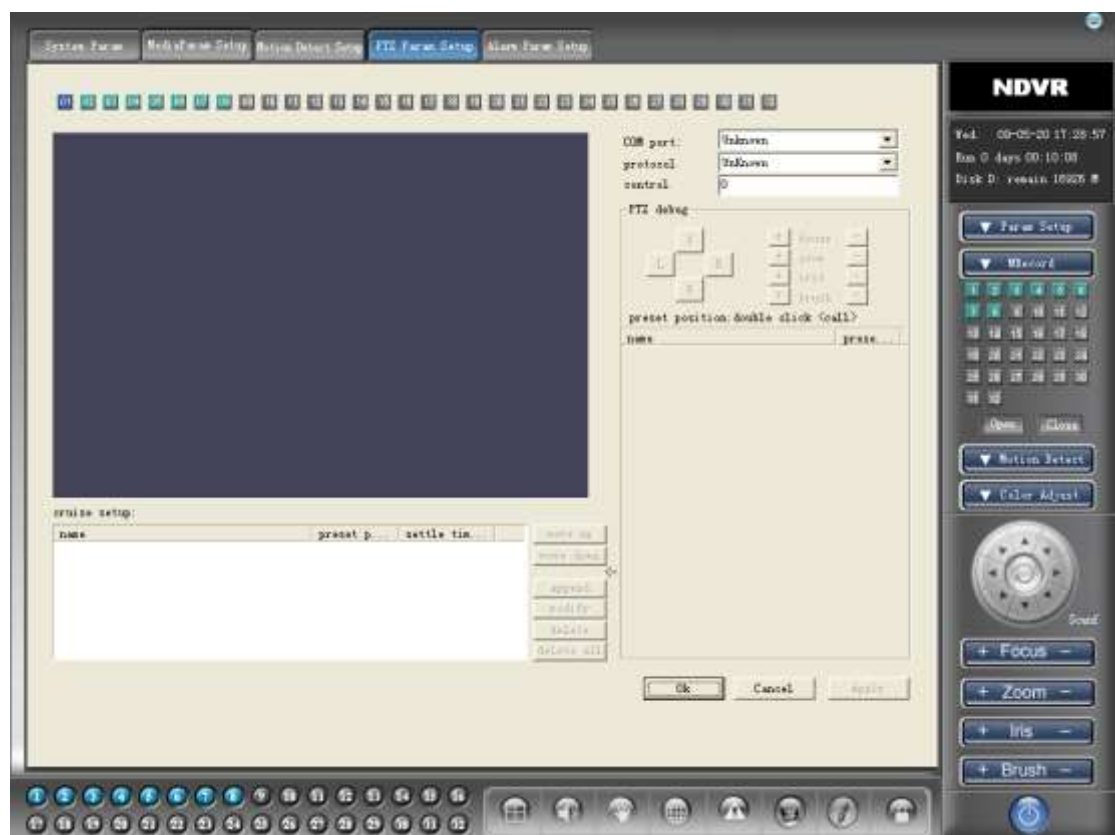
system will preview Little Red points marked with a regional campaign, user-friendly surveillance.

Regular exercise testing: Movement for the automatic detection of open / stop time paragraph. Please refer to methods set up regular video 2.2.2.1 installed.

For a volume settings, select <group elected> functions, set up methods Please refer 2.2 senior operation sections

2.4 PTZ

SETTING



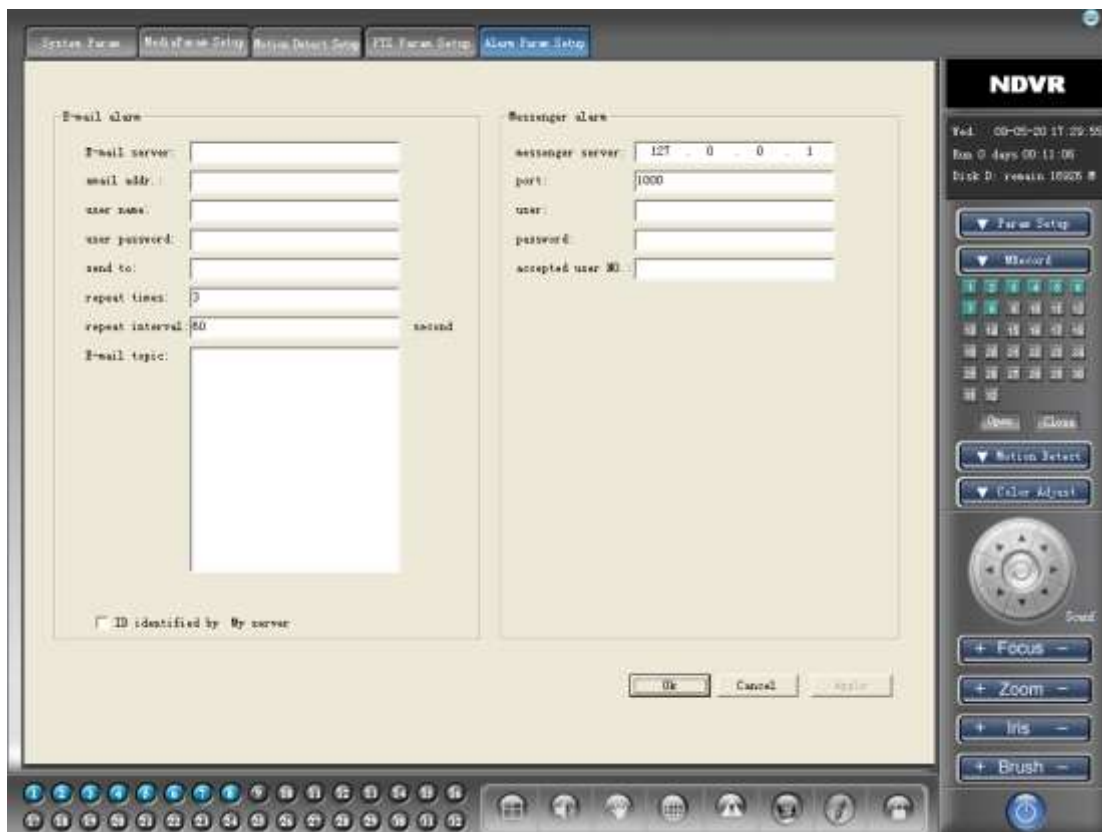
Process PTZ parameters set to begin confirmation equipment used by the right agreement, supporting baud rate, and used by the serial port, PTZ decoder addresses. After confirmation on the above information can be setting.

Regarding the support function of PTZ agreement, users can "pan-tilt debugging" pan-tilt adjustment to a state of expectation, set up after the use of cruise <Add> function will be joined in its preset points, repeat this operation to set cruise lines. At the same time, users can use the system to provide <on the downward shift> <> preset function point

adjustment in the order to facilitate the establishment of key control points.

Tip: Some support the cruise PTZ agreement does not provide preset point adjustment function, at this time <on the downward shift> <> button to show gray, with the order of cruise preset numbering sequence.

2.5 Alarm parameter setting



Including mail messages warning alarm parameters and parameter settings, installed after completion of parameters can be set up in the media and in the opening movement set up to detect the function, trigger conditions including video loss, object movement, IO alarm etc.

3. Manual Recording

Video-level priority system will be divided into four, in descending sequence manually video IO Alarm video, motion detection video, regular video. The interface in the bottom left of the main state channel button, the color changes to the forms reflect the current state of channel work
Pale Blue Channel normal work



Pale Blue-green alternating Manual Recording

Pale Blue-golden alternating motion detect Recording

Pale Blue-dark blue alternating timing Recording

Manual recording for the channel switch button-button click access to video from blue into green, open the channels of video, click again to close the channel of video.

Also available Full, Full off control of all the manual recording channel

4. Motion detect



Here is the manual motion detection, (automatic motion detection see 2.3)
The methods of operation with manual recording.

Tracking: When opened manual detection, the system detected objects users have set up regional campaign, in the corresponding regional campaign to little red point marking, of course, users can manually close this function.

*

5. color adjustment

After the selected channel in the channel screen color can be adjusted and preservation. See also operate: Parameter Settings - media preview set of parameter setting notes.

6 . PTZ Operation

Operating role in the current activities channel (red box marked), Before the user has not yet set up the channel good PTZ agreement, the region function button to prohibit state, only when the user settings PTZ good

corresponding parameters, the group has only button for enabling state and the needs of clients.



:

Cruise: Open / Close cruise function. Cruise only support the PTZ agreement effective, the attractions of parameter settings are detailed set of cruise.

7. Functional Areas

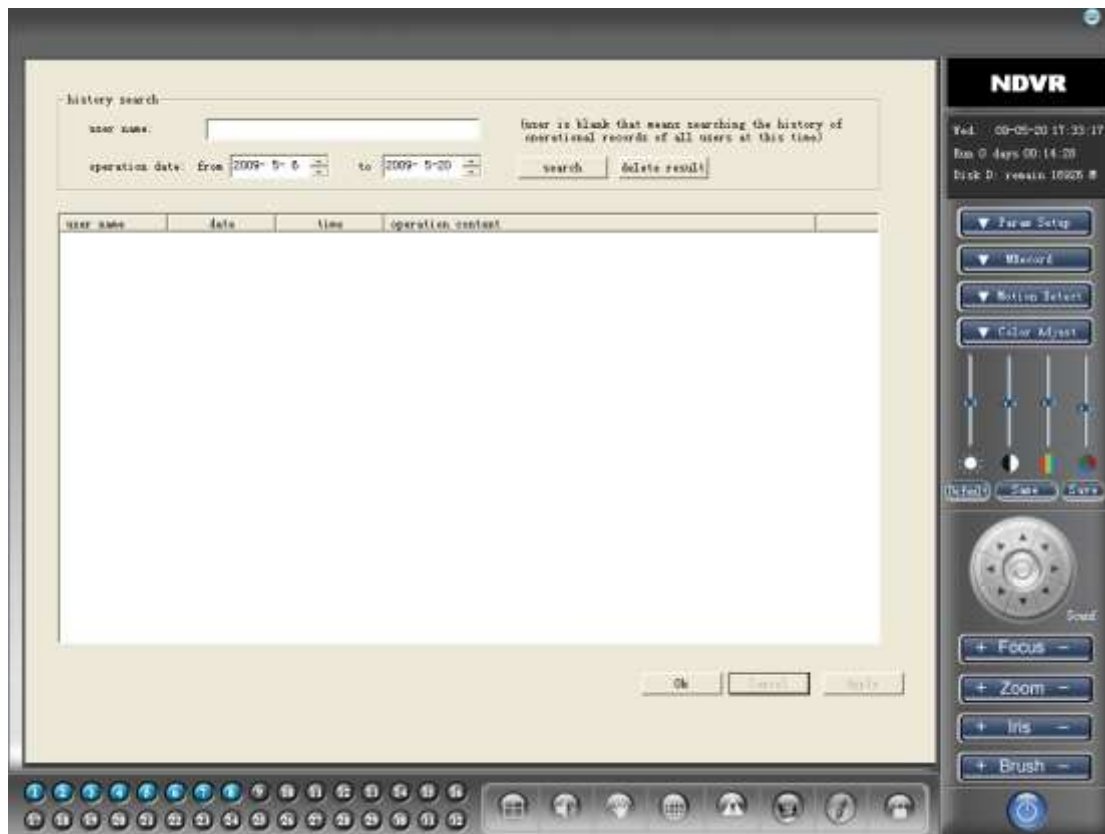


7.1 System lock

Enter the "locking system" state, the system will shield all user input operation, only input user name / password system to unlock the rear resume normal operation state.

7.2 Auxiliary functions

7.2.1 History search



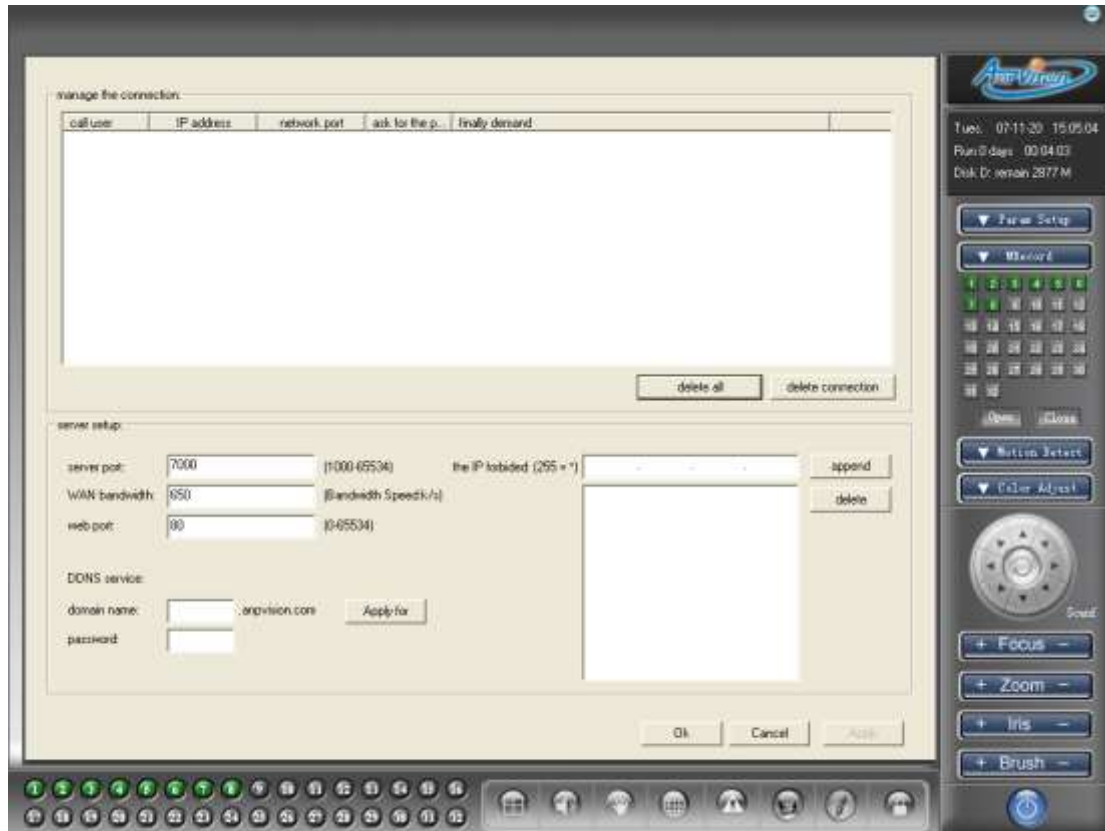
System by user name and time of the two methods of history search, including historical records of all users of various operating systems and records, click on <delete> button on the list could be deleted records show.

7.2.2 Network status

7.2.2.1

Network Status: Connecting the list includes all sign in the remote client machines connecting information, administrators have the option to delete manually connect.

7.2.2.2 Network parameter setting



Server Ports: defaults to 7000, when remote users connect to the port of importation, if multiple mainframe recommended choice to 256 for the port spacing, such as 7000,7256, and so on.

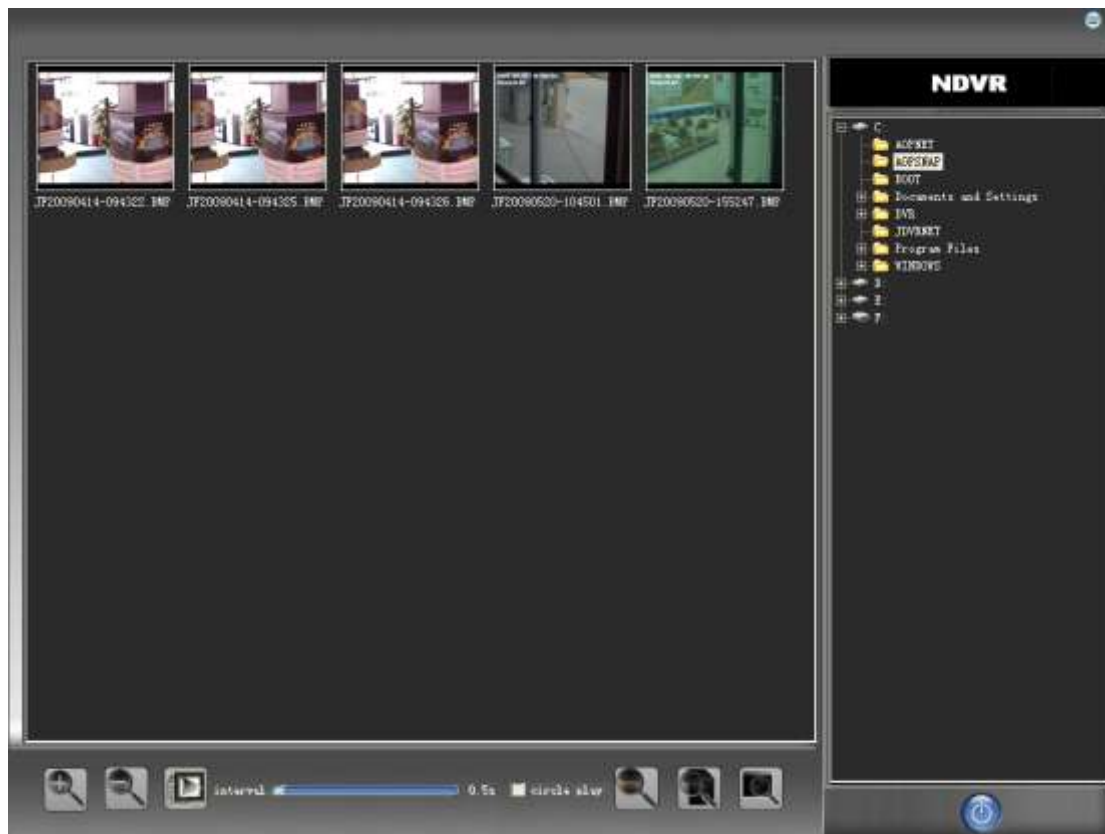
WAN bandwidth: WAN bandwidth to the Internet, such as unclear to service providers advice can also use the experience of (slightly larger than that recommended) installed, defaults to 650 K bps.

Web Control Ports: users of the system to support remote way through IE browser screen, usually IE control ports choice of 80, at this time only the importation of remote host IP customers can visit, to change this setting, remote user access mainframe when required corresponding changes. For example: the machine IP for 218.88.127.98, now port to 8080, remote users have to use the following addresses to visit: <http://218.88.127.98:8080>.

IP prohibit inbound: the system can be carried out on certain fixed IP prohibit inbound operation, set up to support wildcard operation, wildcard "*. "

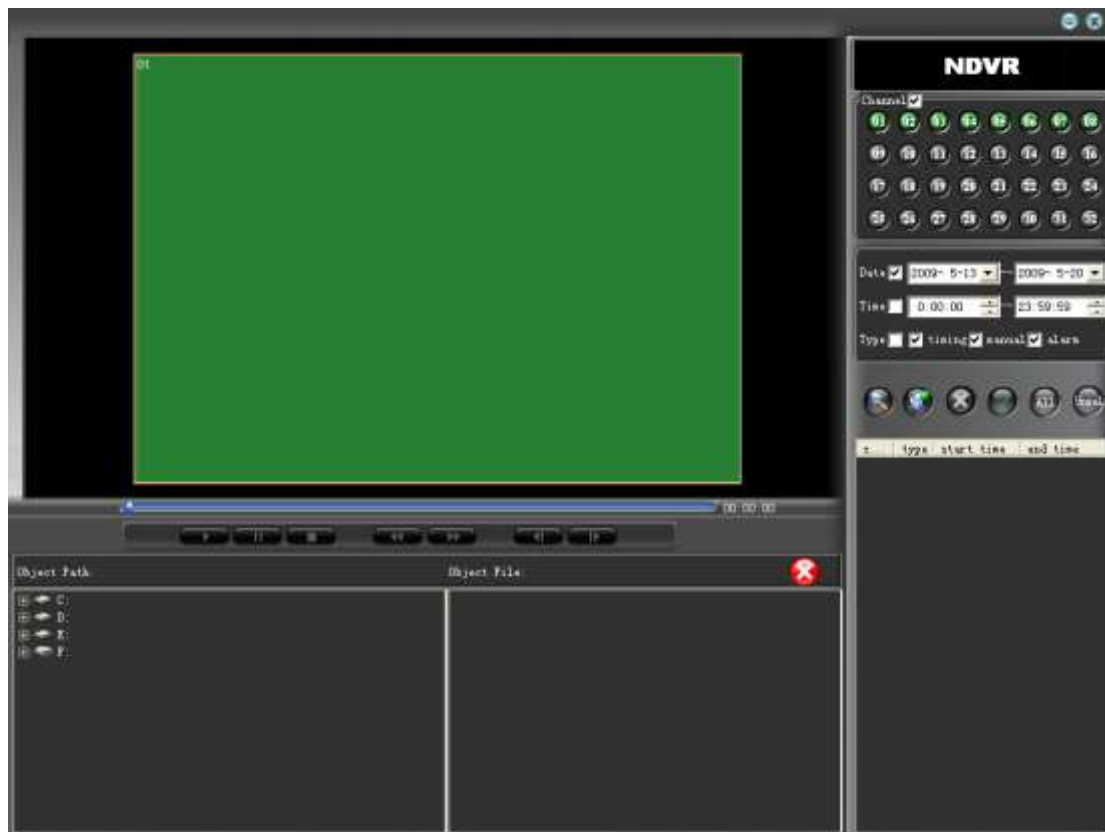
Tip: parameter changes on the network to wait for the next system startup force recommends that users change these parameters immediately after reboot the system.

7.2.3 picture view




"Picture View" user settings for the default directory path snapshots, click "picture View", users can browse snapshot pictures, and its various operations, including zoom, full-screen, slide shows. Users also can choose to watch other directory stored in the other pictures, system support including jpg format pictures, bmp, gif, and so on.


7.2.4 Data backup




System provides "media data backup" function, click access to data backup pages, the backup operation can be carried out. Steps are as follows:

* To identify backup channel, time frame and video types,

Click the "search" button , a list that would meet the requirements of all documents, double-click any one of those documents can be a player in the preview window, click through, the whole election, anti-election to selected functional backup documents.

Choose the target path set goals and document directory, click "file backup"  button, the backup operation can be completed.

Delete key  can delete the backup files operation.

Tip: source files in search of backup channel, time frame and video types of "√" election, said the scope of the restrictions to the contrary that unrestricted. For example: "backup channel", "4" election, said users restrict access to backup, users now need to determine the corresponding backup channel; If not, "√" said View all election channel.

7.2.5Electronic Map

To establish monitoring and control network distribution of the camera intuitive floor plan.



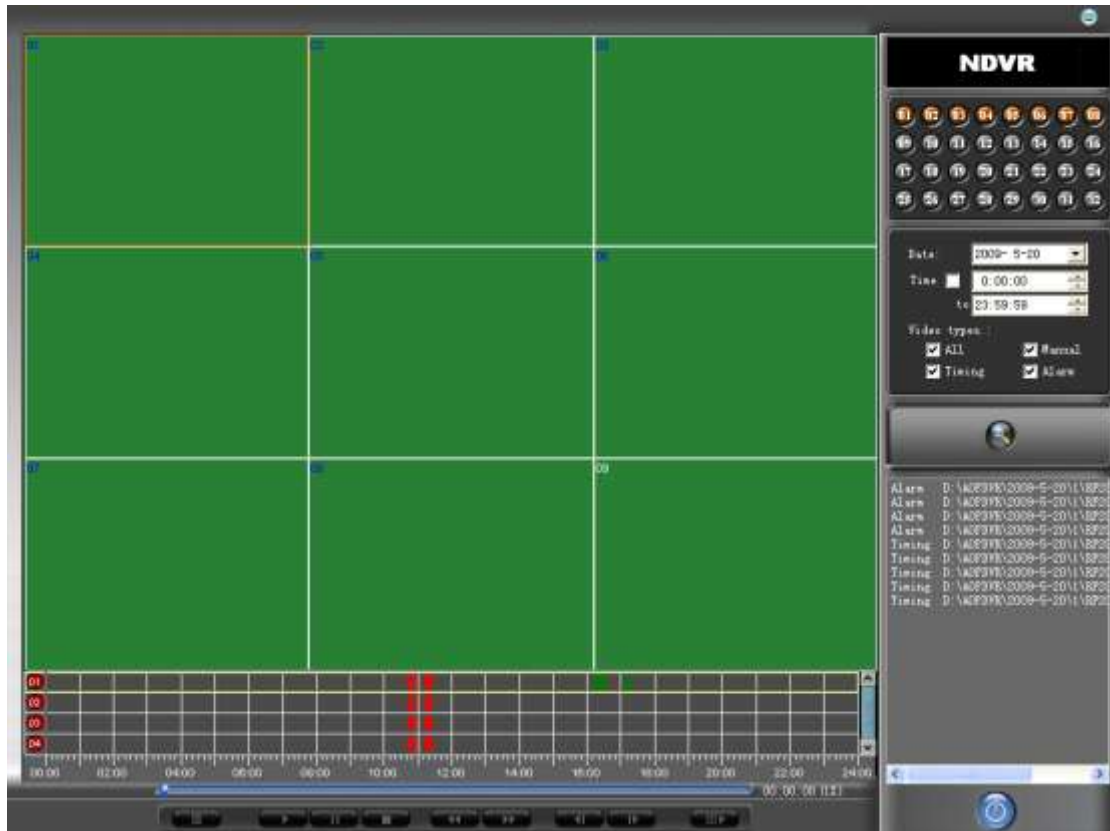
New: the establishment of a new electronic maps, the system will prompt asked to select the default background map.

* Background: Monitor produced by the selected user or photographs of the regional plan document.

The methods of operation: press and hold the left mouse button, drag the top have access to the floor plan of the corresponding camera position can be. Click on the "off" button, pop-up dialog document preservation electronic map, the map of name recognition by the "OK" button, that is the completion of operation.

7.3recording playback

Click  entered the video playback interface



Selected playback date, time

Selected playback according to the user needs specific dates and time slots, the system will automatically find qualified video documents, and the graphic display in the bottom of the time. Of which:

Blue: manual recording documents

Red: alarm video documents

Green: timing recording documents

At this time, may use play, pause, stop, and other functions of the various control operations.


District documents List window will show activities corresponding channel video documents eligible list, click the file, the system will be broadcast by the channel's positioning to file the initial position, so when players in the state system, the channel will be back from time points were broadcast.

Senior playback operation 1:

Set up a system of two modes: single channel playback mode and group playback mode.

Group playback mode: the default system in the work group player mode, the control of all operations at this time are role to all channels, users can in the time of the click the left mouse button approach to setting

the all-channel playback time, click the right mouse button can also set the current activities of the channel broadcast time, in order to realizing the different needs of broadcast control.

Single player mode: that distinguishes it from the group playback mode, single-channel mode, the control operator are all current activities channel role in the operation process, the other channel will not be affected. Click on the "channel select"  button in the pop-up menu select "removal" could enter the single player mode. At this time, all the time in front of the channel serial number colors will be red darken. (For Top Group playback mode, and repeat the above steps, in the pop-up menu choose "all")

The mode of operation methods as:

1. Click the channel to broadcast images, and turn them into activities window, use the left mouse button to set in the time of the channel playback time. (Video or on the right to choose paper documents list box, set the starting time broadcast operation)
2. Players use a variety of playback control buttons operation.
3. For operate on the other channel, repeat the above steps.

Tip: At this point the various channels operate effectively only current activities, stop For players, the channel must be set to achieve state activities. The methods of operation to follow the 1-2-3 principles.

High playback operation 2: bundled playback

In order to enhance flexibility of use, the system provides access - screen for state functions, the system's default state the principles set for the 1-channel state output window to the 1st show, 2-2, n-n, that is, by serial number order to achieve the state set, users can re-establish in accordance with its own requirements for the order of this state to carry out the associated video channel contrast. Specific methods of operation are as follows:

1, the state abolished the system's default setting. In default conditions, the system has achieved all channels and display window for the state to abolish such a state will, in the user interface only in the upper-right corner of the channel buttons to click on to the concept of green can be turned into gold, repeating the operation until all channels are canceled for the state.

2, re-state set. The state will first determine the output video window, so that it will become activities window, select the channel interface

upper right button, that is, to achieve the window and choose between re-channel state determined at this time, channel button again into green color from golden yellow, all the video output of the crossing will be redirected to the designated State set window.

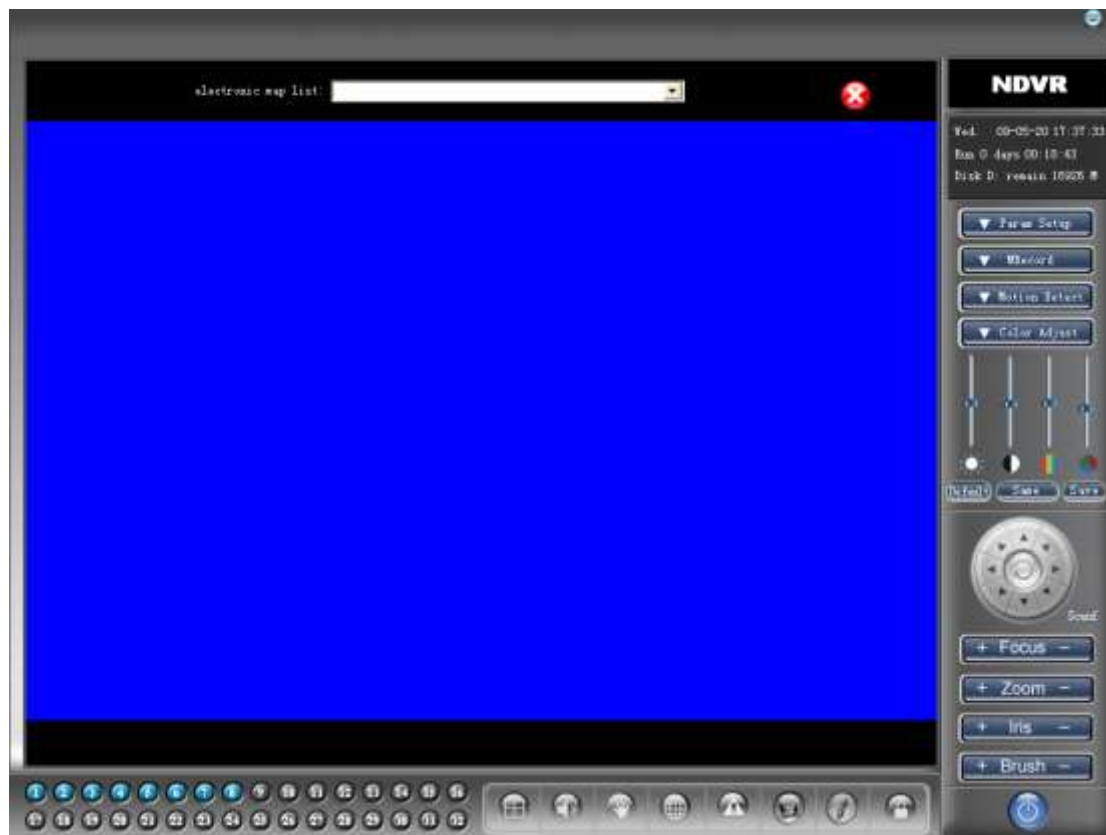
3, repeat steps 2 realization of all channels - the window for state users.

4, the system will automatically save the state strategy for users until the new state re-scheduled.

7.4 Alarm (Reserved)

7.5 Electronic map

Click into the electronic map



Click on the map users need observation camera icon can be directly visit the single point of monitoring screen.

- Double-click the screen to return to the electronic map

Click on the button from the top right corner of the Map View exit mode.

7.6

Photo snapshots



On the valuable screen real-time monitoring rapid preservation of speed camera operation

* System default channel on the activities carried out snapshots operation, the former Please confirm snapshots of the crossing is already in a state of activity.

* Snapshots stored in the user settings file snapshot directory (see 2.1.1 System Preferences)

* View snapshot, see 7.2.3

7.7



Audio Switch



Open / Close audio output (only support audio collection function in 7134- DVR card effectively)

7.8



8 screen segmentation



Set the monitor screen layout.